

## Research Article

# Homology Modeling of Mouse orphan G-protein coupled receptors Q99MX9 and G2A

Aditya Sood

Assistant Professor, Chandigarh University, Punjab, India

Ridhi Sood

Assistant Professor, Chandigarh University, Punjab, India

Abhijit Kumar

Assistant Professor, Chandigarh University, Punjab, India

Gaganjot Kaur

Assistant Professor, Chandigarh University, Punjab, India

Candy Sidhu

Assistant Professor, Chandigarh University, Punjab, India

Ved Prakash

Department of biotechnology, College of engineering & Technology, IILM-AHL, Greater Noida, India

## ABSTRACT

GPCRs are fundamental membrane proteins and they are called as G-Protein Couple Receptors. They are rooted in the cell surface that conveys signals to cell, also known as seven membrane domain receptors. If these receptors do not role correctly, then this may lead to numerous diseases.

Orphan Receptors lack endogenous ligands and their particular purpose is not known. Presently there are few ideal structures in databank for following structural biology studies but no orphan GPCR coordinates exist in protein data bank. The aim for gaining appropriate structures for these proteins is to deorphanize them and to study biological applications. There are numerous GPCRs whose 3D structures are obtainable, using those structures as templates, computer based homology

modeling method can be used to presume 3D structures of numerous proteins by means of their amino acid sequence. In this study, we have modeled Q99MX9\_MOUSE and G2A\_MOUSE, class an orphan GPCRs whose 3D structures have been assumed using Swiss pdb Viewer; the PDB templates used for these orphan GPCRs are 2RH1 and 3UON correspondingly. Based on the outcome of homology modeling of these proteins, their structure has been acquired and their purpose can be presumed on the basis of structural and sequence similarity to known GPCRs. As the structure has been assumed for these GPCRs probable ligands and similarities can be anticipated.

**Keywords:** GPCRs, Homology Modelling, Structure, Function, Ligand.

## Introduction

GPCRs are those proteins which are rooted in the surface of the cell which supports in the transmission of the signals every time there is any kind of reaction to nucleotides, proteins amino acids etc.<sup>1-3</sup> Due to their inappropriate functioning, many diseases arise. This makes GPCRs significant drug targets. The superfamily of GPCRs is the major class of surface receptors of cell, they controls diverse tasks of cell for the physiological responses. This makes GPCRs the significant drug objectives and thus is useful in the pharmaceutical expansions. Numerous of the human derived GPCRs are still orphans who are structure and functions or the ligands have yet not identified.<sup>2-5</sup> This makes GPCR significant to the research related to drug designs. Nuclear magnetic resonance spectroscopy and X-ray crystallography are the main techniques used to recognize the structures of proteins. In NMR spectroscopy the proteins are essential not to be crystallized but dissolved protein with high applications are required. Therefore, GPCR structures cannot be acknowledged with this method. X-ray crystallography is responsible for the atomic information of the proteins which are

globular. But GPCRs structures cannot be resolved from this technique because it is very hard to crystallize them.<sup>6,7</sup> Therefore, different structure based methods have to be tracked to resolve the structures and functions of GPCRs. Building models by aligning the target sequences and studying their evolutionary relationships can assistance in formative the structures and functions of GPCRs.<sup>8-10</sup>

## Software's and Data sources

- GLIDA: GPCR-Ligand Database
- pBLAST
- Protein data Bank (PDB)
- SWISS-PROT
- Swiss pdb Viewer
- SAVS: Structural Analysis and Verification Server
- Computed Atlas of Surface Topography of proteins (CASTp)

## Need of Project

In situation of the human genome, GPCRs are the main gene superfamily. Maximum of the drug based research is going on in this field because not working of these receptors lead to numerous diseases. Considerate their structures, functions and ligand binding sites can aid in drug design which can aid in dealing with the diseases. Deorphanization of orphan GPCRs can widen research and help in discovering new drug targets and also aid in understanding the functioning of the orphan GPCRs on cellular level, as they are involved in numerous signaling pathways.

### Methodology

1. Two orphan GPCRs – Q99MX9\_mouse and G2A\_mouse were selected using GLIDA.
2. The fasta files of these two orphan G-proteins were retrieved.
3. Protein Blast was done and subsequent hits were obtained.
4. The pdb ID's of different templates of interest that are 2RH1 and 3UON were fetched and downloaded using PDB.
5. The fasta sequences of the orphan G-proteins and their respective templates were uploaded in swiss-prot.
6. Homology Modelling was done and the resulting modeled proteins were saved as .pdb files.
7. The energies were checked using swiss pdb viewer. For the structure to be in stable state its energy should be minimum.
8. The ramachandran plots were studied for the modeled proteins and the residues residing in favorable and allowed regions were studied using Structural Analysis and Verification Server.
9. The residues residing in disallowed regions were shifted to allowed regions via loop modeling and
10. Subsequently energies were computed and the modeled structures were checked for the same.
11. The active sites or ligand binding sites were predicted using CASTp server.
12. The fasta sequences of the modeled orphan G proteins were saved and used as an input format in BLAST.
13. Phylogenetic analysis was done.
14. On the basis of Phylogenetic analysis, the possible functions were predicted.

### Results and Discussions

All the biological data and the chemical information of the ligands of GPCRs are obtainable in the GPCR-Ligand Database well-known as GLIDA. It includes both bioinformatics and chemo informatics approaches to examine the data of GPCRs [Figure 1-4]. Consequently, it is beneficial in the drug related finding. Mostly the GPCR data is connected to human, mouse

and rats. Mouse and rats is the perfect organisms used for the discoveries of numerous drugs.<sup>9-11</sup>

All the data related to ligands such as the active sites, the binding pockets, the charge on the ligands, the volume of the binding pockets (aids in determining the size of ligands) can assistance in calculating the related drugs [Figure 5-7]. Mouse Models are extensively used in drug discovery and clinical trials. If structural and functional information of mouse orphan GPCR can be gained, it can be used in deducing active sites or ligand binding sites for numerous drugs [Figure 8-11]. This is a stepping stone in finding drugs for numerous diseases in humans as mouse and human genetic makeup is very similar. Employing the information about a deorphanized GPCR also will offer useful insights into the purposes related to the protein and various pathways complex in the cells.<sup>10-12</sup>

The Phylogenetic examination aided in understanding and predicting the purposes of modeled proteins. The closely connected proteins display a important use in drug discovery, ligand prediction and additional pharmacological use. Hence we conclude that the modeled G-proteins play a vital role in pharmacological science and predicting specific ligands.<sup>10-12</sup>

### REFERENCES

1. Watson S, Arkinstall S. The G protein Linked Receptors Facts Book. New York: Academic Press 1994; 427 p.
2. Flower DR. Modelling G-protein-coupled receptors for drug design. *biochimBiophysActa* 1999; 1422: 207-234.
3. Takeda S, Kadowaki S, Haga T, Takaesu H, Mitaku S (2002) Identification of G protein coupled receptor genes from the human genome sequence. *FEBS Lett* 520: 97-101.
4. Collins FS. Finishing the euchromatic sequence of the human genome. *Nature* 2004; 431: 931-945.
5. LDrews J. Drug Discovery: A historical perspective. *Science* 2000; 287: 1960-1964
6. George SR, O'Dowd BF, Lee SP. G-protein –coupled receptor oligomerisation and its potential for drug discovery *nature Rev. Drug Discov* 2002; 1: 808-820.
7. Skolnick J, Fetrow JS, Kolinski A. Structural genomics and its importance for gene function analysis. *Nat Biotechnol* 2000; 18:283-287.
8. Kuhlbrandt W, Gouaux. Membrane proteins. *CurropinStructBiol* 1999; 9: 445-447.
9. Palczewski K, Kumasaka T, Hori T, Behnke CA, Motoshima H. Crystal structure of rhodopsin: a G protein-coupled receptor. *Science* 2000; 289: 739-745.
10. AL Hopkins, CR Groom. *Nat. Rev. Drug Discovery* 2002; 1 727-730.
11. Wess G, *Drug Discovery Today* 2002; 4: 533-535.
12. Singh SK, Singh A, Prakash V, C SK. Structure modeling and dynamics driven mutation and phosphorylation analysis of Beta-amyloid peptides. *Bioinformation* 2014; 10:569-74.

Q99MX9_MOUSE		Query
Gene Name	Gpr84	
Family	Putative / unclassified Class A GPCRs	
GPCRDB	Q99MX9_MOUSE	
UniProt	Q99MX9	
IUPHAR		
Entrez Gene	80910	
KEGG		
Sequence	Q99MX9_MOUSE.fasta	

>Q99MX9\_MOUSE Orphan G protein-coupled receptor 84.

```

MWNSSDANFSCYHESVLGYRYFAI IWGVAVAVTGTGVGNVLTLLALAIRPKLRTRFNLLIANLTLADLLYCTLLQP
  FSVDTYLHLHWRTGAVFCRIFGLLLFTSNSVSI LTLCLIALGRYLLIAHPKLFQVFSAKGIVLALVGS
  WVVGVTSFAPLWNVFLVLPVVCTCSFDRMRGRPYTTILMGIYFVLGLSSVGVFYCLIHQVKRAARALD
  QYGLHQASIRSHQVAGTQEAMPGHFQELDSGVASRGPSEGISSEPVSAATTQTLEGDSSEAGGQIRKA
  AQQIAERSLPEVHRKPRETAGARRATDAPSEFGKVTRMCFVFLCFALSYIPFLLLNI LDARGRAPRVV
  HMVAANLTWLN SCINPVLYAAMNRQFRHAYGSILKRG PQSFRRFH

```

**Figure 1:** Result for Query Q99MX9\_MOUSE.

G2A_MOUSE	
Gene Name	Gpr132, G2a
Family	Putative / unclassified Class A GPCRs
GPCRDB	G2A_MOUSE
UniProt	Q9Z282
IUPHAR	
Entrez Gene	56696
KEGG	
Sequence	G2A_MOUSE.fasta

>G2A\_MOUSE Lysophosphatidylcholine receptor G2A (G-protein coupled receptor 132).

```

MRSEPTNAAGNTTLGVTSVLQSTSVPSSETCHVSYEESRVVLVVVYSAVCLLGLPANCLTAWLTLLQVLQRNVLA
  VYLFCLSLCELLYISTVPLWIIYIQNQHKWNLGPQACKVTAYIFFCNIYISILLCCISCDRYMAVVYA
  LESRGHRHQRTAVTISACVILLVGLVNYPVFDMKVEKSFCEPLRMNSKIAGYHYLRFTFGFAIPLGIL
  AFTNHQIFRSIKLSDSLSAAQKNKVKRSIAIVVTIFLVCFAPYHVLLVKAASFYQGDMDAVCAFES
  RLYTVSMVFLCLSTVNSVADPIIYVLGTDHSRQEVSR IHTGWKKWSTKTYVTCSKDSEETHLPTELSNT
  YTFPNPAHPPGSQPAKLGLLCS PERLPEELC

```

**Figure 2:** Result for G2A\_MOUSE

## Sequences producing significant alignments:

Accession	Description	Max score	Total score	Query coverage	E value	Max ident	Links
<a href="#">3PBL_A</a>	Chain A, Structure Of The Human Dopamine D3 Receptor In Comple	<a href="#">79.0</a>	79.0	97%	8e-16	23%	<a href="#">S</a>
<a href="#">3UON_A</a>	Chain A, Structure Of The Human M2 Muscarinic Acetylcholine Rec	<a href="#">75.9</a>	75.9	92%	8e-15	21%	<a href="#">S</a>
<a href="#">4EJ4_A</a>	Chain A, Structure Of The Delta Opioid Receptor Bound To Naltrind	<a href="#">66.6</a>	66.6	89%	9e-12	22%	<a href="#">S</a>
<a href="#">4DKL_A</a>	Chain A, Crystal Structure Of The Mu-Opioid Receptor Bound To A	<a href="#">65.1</a>	65.1	88%	3e-11	21%	<a href="#">S</a>
<a href="#">4DAJ_A</a>	Chain A, Structure Of The M3 Muscarinic Acetylcholine Receptor >	<a href="#">64.7</a>	64.7	89%	4e-11	20%	<a href="#">S</a>
<a href="#">3D4S_A</a>	Chain A, Cholesterol Bound Form Of Human Beta2 Adrenergic Recept	<a href="#">60.8</a>	60.8	30%	5e-10	32%	<a href="#">S</a>
<a href="#">3SN6_B</a>	Chain R, Crystal Structure Of The Beta2 Adrenergic Receptor-Gs Pi	<a href="#">61.2</a>	97.4	57%	5e-10	32%	<a href="#">S</a>
<a href="#">3KQ6_A</a>	Chain A, Crystal Structure Of A Methylated Beta2 Adrenergic Rece	<a href="#">60.5</a>	97.4	57%	5e-10	32%	<a href="#">S</a>
<a href="#">2RH1_A</a>	Chain A, High Resolution Crystal Structure Of Human B2-Adrenergic	<a href="#">60.8</a>	60.8	30%	6e-10	32%	<a href="#">S</a>
<a href="#">2R4R_A</a>	Chain A, Crystal Structure Of The Human Beta2 Adrenoceptor	<a href="#">60.5</a>	97.4	57%	6e-10	32%	<a href="#">S</a>
<a href="#">3POG_A</a>	Chain A, Structure Of A Nanobody-Stabilized Active State Of The I	<a href="#">60.8</a>	60.8	30%	6e-10	32%	<a href="#">S</a>
<a href="#">2VT4_A</a>	Chain A, Turkey Beta1 Adrenergic Receptor With Stabilising Mutati	<a href="#">32.0</a>	32.0	55%	0.60	22%	
<a href="#">3PWH_A</a>	Chain A, Thermostabilised Adenosine A2a Receptor >pdb 3REY A C	<a href="#">30.8</a>	30.8	73%	1.6	22%	
<a href="#">3UON_A</a>	Chain A, Structure Of The Human M2 Muscarinic Acetylcholine Rec	<a href="#">29.6</a>	29.6	8%	3.6	32%	
<a href="#">8OHM_A</a>	Chain A, Crystal Structure Of Rna Helicase From Genotype 1b Hepa	<a href="#">29.3</a>	29.3	19%	4.9	32%	
<a href="#">1HLL_A</a>	Chain A, Nmr Structure Of T3-I2, A 32 Residue Peptide From The A	<a href="#">26.6</a>	26.6	5%	8.0	52%	
<a href="#">1HOF_A</a>	Chain A, Nmr Structure Of T3-I2, A 32 Residue Peptide From The A	<a href="#">26.2</a>	26.2	5%	8.8	52%	

Figure 3: Blast results

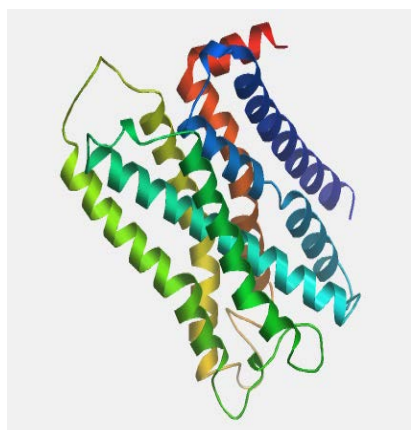
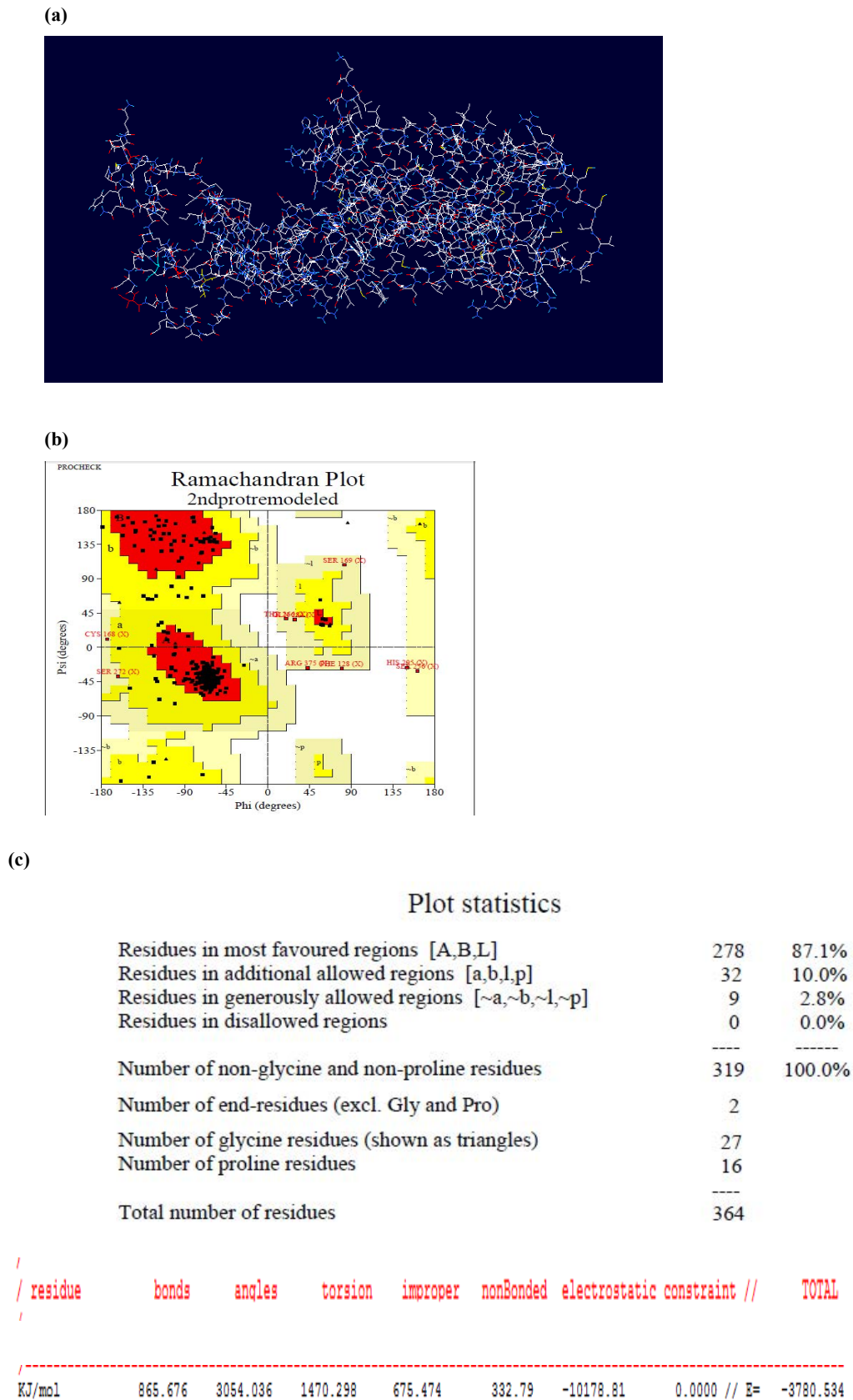
Modeled protein structure of  
Q99MX9\_mouseModeled protein structure of  
G2A\_mouse

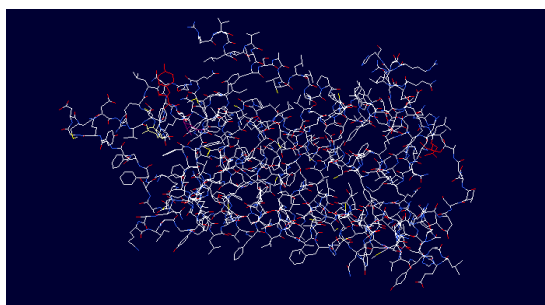
Figure 4: Swiss Prot results



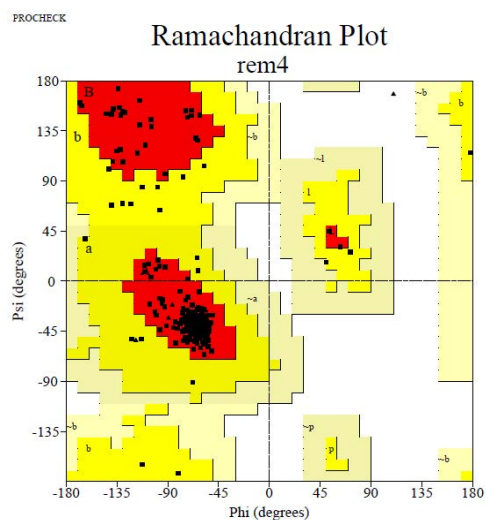
**Figure 5:** (a) Protein structure, (b) Ramachandran plot and (c) Energy plot for modeled protein Q99MX9\_mouse.



(a)



(b)



(c)

## Plot statistics

Residues in most favoured regions [A,B,L]	230	92.0%
Residues in additional allowed regions [a,b,l,p]	20	8.0%
Residues in generously allowed regions [-a,-b,-l,-p]	0	0.0%
Residues in disallowed regions	0	0.0%
-----		-----
Number of non-glycine and non-proline residues	250	100.0%
Number of end-residues (excl. Gly and Pro)	34	
Number of glycine residues (shown as triangles)	9	
Number of proline residues	8	
-----		-----
Total number of residues	301	

```

/
/ residue      bonds      angles      torsion      improper      nonBonded      electrostatic constraint //      TOTAL
/
KJ/mol        557.096    2509.668    1007.120    507.632     -1891.67     -7980.61     0.0000 // E= -5290.770

```

Figure 6: (a) Protein structure, (b) Ramachandran plot and (c) Energy plot for modeled protein G2A\_mouse

```

AIIWGVAVAVTGTVGNVLTLLALAIRPKLRTRFNLLIANLTLADLLYCTLLQPFSVDTYLHLH
WRTGAVFCRIFGLLLFTSNSVSILTLCLIALGRYLLIAHPKLFQVFSAKGIVLALVGS
WVVGVTSEFAPLWNVFVLVPVVCTCSFDRMRGRPYTTILMGIYFVLGLSSVGVFYCLI
HRQVKRAARALDQYGLHQASIRSHQVAGTQEAMPGHFQELDSGVASRGPSEGISSEP
VSAATTQTLEGDSSEAGGQGIRKAAQQAERSLPEVHRKPRETAGARRATDAPSEFG
KVTRMCFVFLCFALSYPFLLLNILDARGRAPRVVHMVAANLTLWLNSCINPVLYAA
MNRQFRHAYGSILK

```

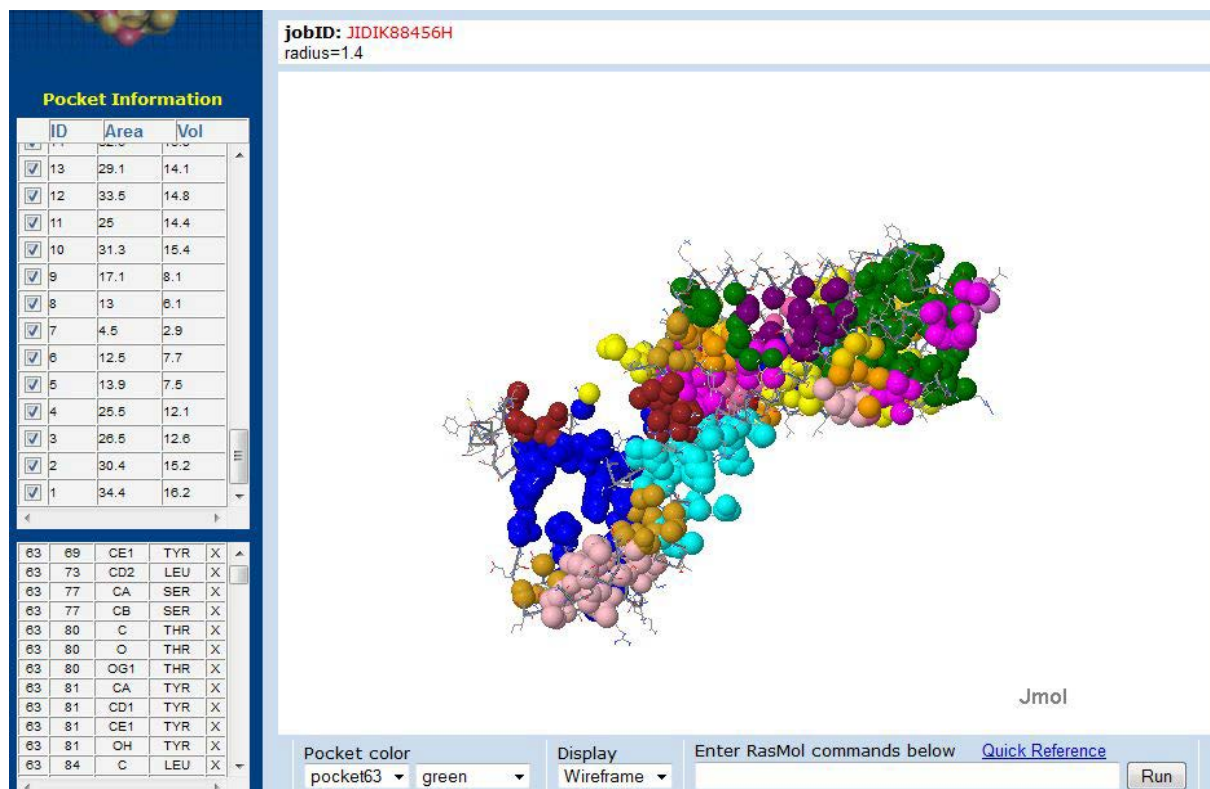
**Figure 7:** Fasta file of modeled protein Q99MX9\_mouse.

```

AIIWGVAVAVTGTVGNVLTLLALAIRPKLRTRFNLLIANLTLADLLYCTLLQPFSVDTYLHLH
WRTGAVFCRIFGLLLFTSNSVSILTLCLIALGRYLLIAHPKLFQVFSAKGIVLALVGS
WVVGVTSEFAPLWNVFVLVPVVCTCSFDRMRGRPYTTILMGIYFVLGLSSVGVFYCLI
HRQVKRAARALDQYGLHQASIRSHQVAGTQEAMPGHFQELDSGVASRGPSEGISSEP
VSAATTQTLEGDSSEAGGQGIRKAAQQAERSLPEVHRKPRETAGARRATDAPSEFG
KVTRMCFVFLCFALSYPFLLLNILDARGRAPRVVHMVAANLTLWLNSCINPVLYAA
MNRQFRHAYGSILK

```

**Figure 8:** Fasta file of modeled protein G2A\_mouse.



**Figure 9:** CASTp results of Q99MX9\_mouse.

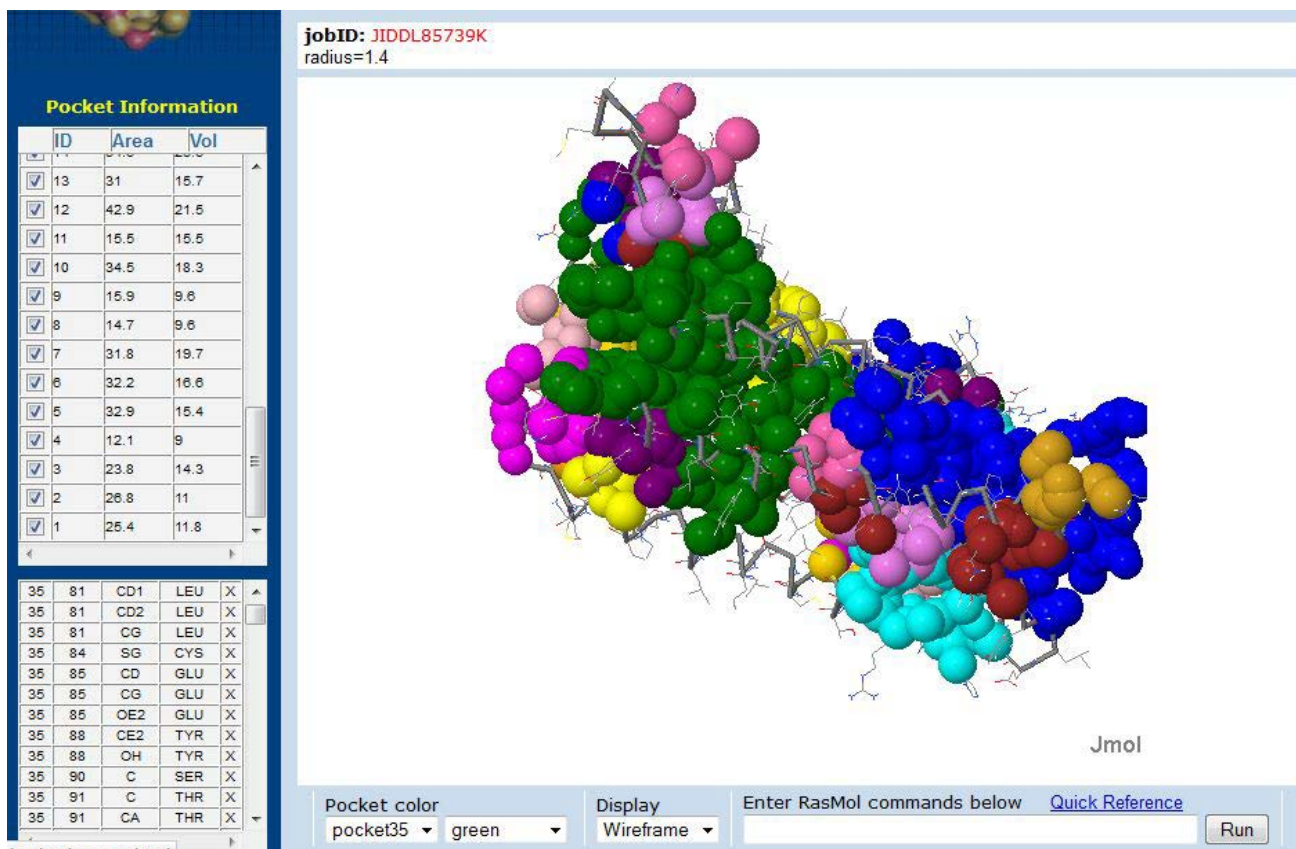
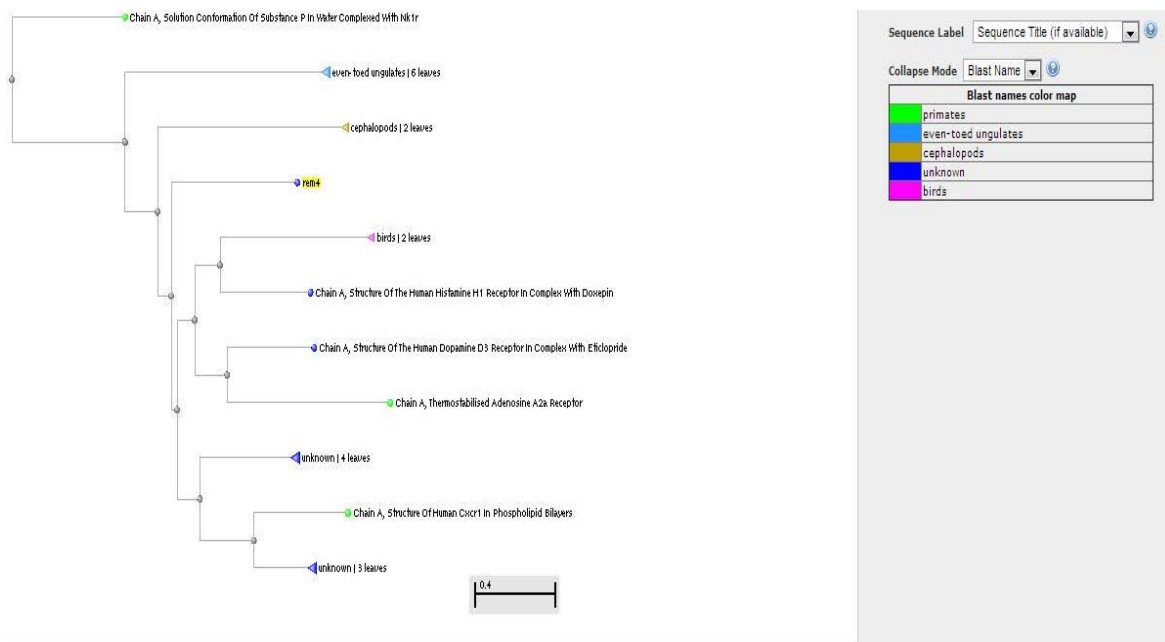
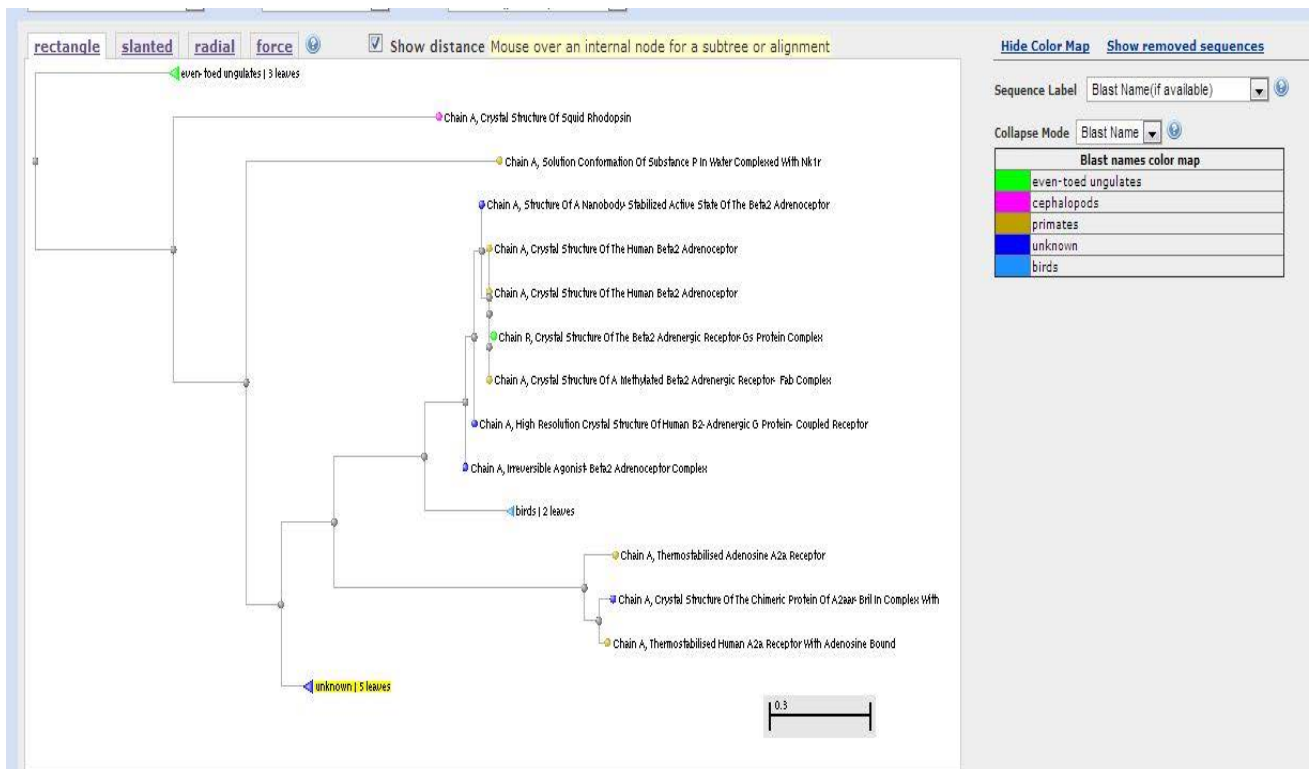


Figure 10: CASTp results of G2A\_mouse.





**Figure 11:** Phylogenetic Analysis of Modeled Proteins.

ADDRESS FOR CORRESPONDENCE:

Aditya Sood, Department of Preventative Medicines, Northwestern University Feinberg School of Medicine, Chicago, USA; e-mail: [er.adityasood@gmail.com](mailto:er.adityasood@gmail.com)