

CLINICAL IMAGING

Hepatic and Splenic Arteries' Pseudoaneurysms Causing *Hemosuccus Pancreaticus*

Surakit Pungpapong, Massimo Raimondo

Division of Gastroenterology and Hepatology, Mayo Clinic, Jacksonville, FL, USA

A 63-year-old woman was transferred to our institution with obscured intermittent gastrointestinal bleeding for consideration of capsule endoscopy. Her past medical history was significant for idiopathic chronic pancreatitis, complicated by pancreatic pseudocysts. Several upper and lower endoscopies failed to identify any source of bleeding. CT scan of abdomen with intravenous contrast demonstrated chronic pancreatitis with 2 pseudocysts in the head and body of the pancreas. There were two pseudoaneurysms identified, one arising from the common hepatic artery communicating with one of pseudocyst (Image 1, solid arrow) and the other arising from the splenic artery communicating with main pancreatic duct in the tail of pancreas (Image 1, double arrow). Patient underwent selective celiac angiography, which confirmed the



Image 2

pseudoaneurysms (Image 2). The coil embolization of the common hepatic artery and the splenic artery were successfully performed to occlude the pseudoaneurysms (Image 3). No further gastrointestinal bleeding recurred following the procedure.

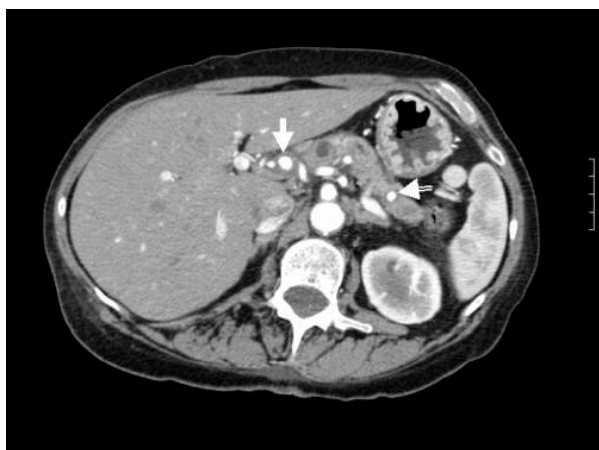


Image 1

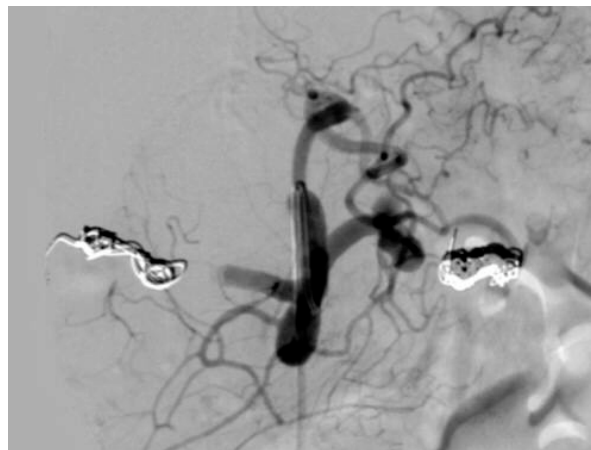


Image 3

Received May 3rd, 2004 - Accepted June 17th,
2004

Keywords Aneurysm, False; Angiography;
Embolization, Therapeutic; Gastrointestinal
Hemorrhage; Pancreatic Ducts; Pancreatic
Pseudocyst; Pancreatitis

Correspondence
Massimo Raimondo

Division of Gastroenterology and Hepatology
Mayo Clinic
4500 San Pablo Road
Jacksonville, FL 32224
USA
Phone: +1-904.953.7382
Fax: +1-904.953.7260
E-mail: raimondo.massimo@mayo.edu