

CASE REPORT

Evaluation of Immune Thrombocytopenia leading to Diagnosis of Advanced Pancreatic Adenocarcinoma

Dhauna Karam, Pant Mukta Purohit, Peter A Morawiecki, Chandra S Mouli

Departments of Hemato-oncology, Pathology and Radiology, Capt. James A Federal Health Care Center, N. Chicago, IL, United States

ABSTRACT

Context Evaluation for Immune thrombocytopenic purpura leading to diagnosis of advanced pancreatic adenocarcinoma has not been previously reported in literature. **Case report** We present a case of a 72 year old male who presented to our center with epistaxis, hematuria and prolonged bleeding from leg wound. Complete blood count revealed a platelet count of 2 k/uL. A complete physical exam with an extensive work up, ruled out other causes of thrombocytopenia including drugs, infections, liver disease and coagulation disorders. Computed tomography abdomen and pelvis, done as a part of workup to assess for hepatosplenomegaly revealed a pancreatic and a liver mass. Biopsy of liver mass confirmed the diagnosis of pancreatic adenocarcinoma. A trial of intravenous steroids and immunoglobulins quadrupled the platelet count initially, but then platelet count continued to drop. Further treatment with rituximab improved platelet counts to over 100 k/uL. The absence of any apparent cause of thrombocytopenia, coupled with a response to steroids and immunoglobulins initially, and rituximab later, were confirmatory of immune thrombocytopenia. **Conclusion** Immune thrombocytopenic purpura can be the presenting feature of advanced pancreatic adenocarcinoma and our case highlights the importance of a thorough workup that led to diagnosis of pancreatic malignancy.

INTRODUCTION

During the year 2016, in United States, it is estimated that 53,070 new cases of pancreatic adenocarcinoma will be diagnosed, out of which, 41,780 people are expected to die of pancreatic cancer [1]. In contrast to declining trend of incidence for most cancers, incidence of pancreatic cancer tends to be rising from 2003 to 2012 because of increasing prevalence of obesity, aging population and other unknown factors [2, 3]. Liver and pancreatic malignancies are considered two of the most fatal cancers with increasing cancer related death rates. Pancreatic cancer remains the fourth most common cause of cancer related deaths in men and women [4]. Early detection of pancreatic cancer plays an important role in determining management and prognosis of this deadly disease [5]. Here we present an interesting case of a patient in whom workup for ITP lead to diagnosis of pancreatic adenocarcinoma.

CASE REPORT

We present a case of a 72 year old male with the past medical history of successfully treated colon and bladder

cancer, who presented to ER with complaints of epistaxis, hematuria and prolonged bleeding from superficial leg wound. Patient also complained of 40 pound weight loss in 2 months associated with mid abdominal and back pain. His vitals were stable. Physical exam was significant for multiple purpuric spots throughout the trunk and extremities with ecchymosis at IV insertion sites. Abdomen exam revealed non tender hepatosplenomegaly with a liver span of 14cm. Initial CBC revealed thrombocytopenia with platelet count of 2 k/uL, anemia with Hemoglobin of 11 g/dL and normal white blood cell count. Further review of the case history ruled out alcohol use, anticoagulants or liver cirrhosis as causes of thrombocytopenia. Peripheral smear showed no schistocytes. LDH, haptoglobin and reticulocyte count were normal ruling out hemolysis. DIC was ruled out with normal fibrinogen level, Prothrombin and normal activated thromboplastin time. Patient had no signs of infection and was not taking any medications that will cause thrombocytopenia (**Figure 1**). Pseudothrombocytopenia was ruled out by rechecking platelet counts in blood samples with sodium citrate as anticoagulant. Based on clinical findings and absence of other causes of thrombocytopenia including drug use, infection, liver cirrhosis, DIC, thrombotic platelet consuming disorders, pseudothrombocytopenia, acute thrombocytopenia was thought to be secondary to Immune etiology (**Figure 2**).

As a part of workup, a CT scan of abdomen/pelvis was ordered to evaluate hepatosplenomegaly, which revealed a large 9.5×11.6×2.4 cm mass lesion in the right lobe of liver with a 3×2×2.3 cm necrotic tumor in the distal body of

Received June 15th, 2016 - Accepted July 22nd, 2016
Keywords Pancreatic neoplasms; Purpura, Thrombocytopenic, Idiopathic
Abbreviations CT Computed Tomography; ITP Immune thrombocytopenic purpura;
Correspondence Dhauna Karam
Department of hemato-oncology, Pathology and radiology
Capt James A Lovell FHCC,
N. Chicago, IL
Tel +309-825-6969
E-mail Dhauna.karam@gmail.com

pancreas. CT scan also revealed a moderate splenomegaly, of about 16.4 cm in length. MRI confirmed above findings and additionally revealed several adjacent satellite lesions along the lateral aspect of liver, the largest of which measured 2.8×1.8×2.6 cm. Carcinoembryonic antigen and alpha feto protein were within normal limits; CA-19-9 was elevated at 7114 U/mL. Biopsy of the liver lesion revealed pancreatic adenocarcinoma.

Patient was given a dose of intravenous steroids (solumedrol) and IVIG 1 mg/kg for management of ITP. Platelet count improved to 13 k/uL with above management and remained stable for 5 days. Patient was then transitioned to oral prednisone. Based on the clinical response, a diagnosis of immune thrombocytopenic purpura was confirmed and hence bone marrow exam or antibody analyses were not performed. But after initial improvement, platelet counts continued to drop while the patient was on oral steroids. Weekly rituximab was initiated, and counts increased to 100 k/uL. Platelet count remained stable thereafter. Before chemotherapy could be initiated, Patient chose hospice and died shortly thereafter (Figure 3, 4).

DISCUSSION

Immune thrombocytopenia (ITP) is an acquired form of thrombocytopenia due to autoantibody-mediated destruction of platelets [6]. ITP can occur in children and adults; though it tends to be self-limiting in the former and chronic in the latter [6]. The disorder is more common in young woman and older men above age 70.

ITP is a diagnosis of exclusion, characterized by isolated thrombocytopenia and the lack of a clinically-apparent condition responsible for the low platelet count. In the absence of disseminated intravascular coagulation, bone marrow infiltration or thrombotic microangiopathy causing thrombocytopenia, Immune mediated thrombocytopenia should be considered [7, 8].

In our patient, workup for new onset ITP revealed advanced pancreatic adenocarcinoma. We have long known the association of ITP with lymphoproliferative malignancies [9] and few solid tumors like non-small cell lung cancer, breast and ovarian cancers [10, 11]. To our knowledge, the occurrence of ITP as a possible paraneoplastic syndrome in a patient with pancreatic adenocarcinoma is rare with only two cases reported in literature [12, 13]. The etio-pathogenesis of such a correlation is not completely understood. Malignancies are known to activate auto immune cascade, which could lead to production of platelet autoantibody. Bir *et al.* [12] reported that circulating immune complexes interact with platelets causing platelet aggregation and thrombocytopenia (Figure 5).

Steroids are the first line of treatment for ITP, followed by Intravenous immunoglobulins and rituximab. Splenectomy is reserved for patients not responding to conservative management [14, 15, 16].

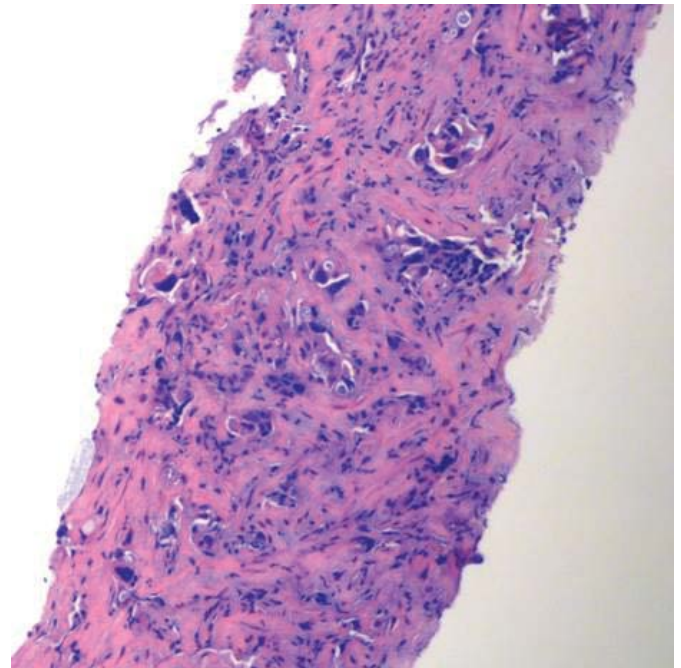


Figure 1. Core biopsy of liver mass demonstrating a poorly differentiated adenocarcinoma (10X, H and E).

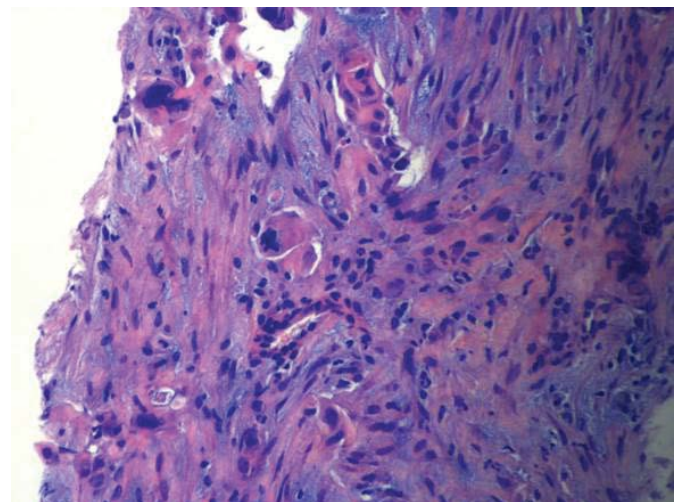


Figure 2. Tumor cells with nuclear pleomorphism and atypical mitotic figures (arrow) in a desmoplastic stroma. (20X, H and E)

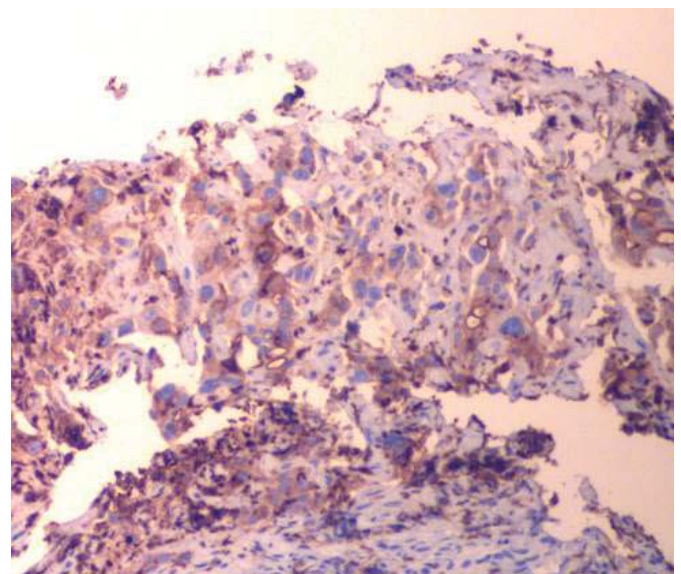


Figure 3. Tumor cells express polyclonal CEA (20X).

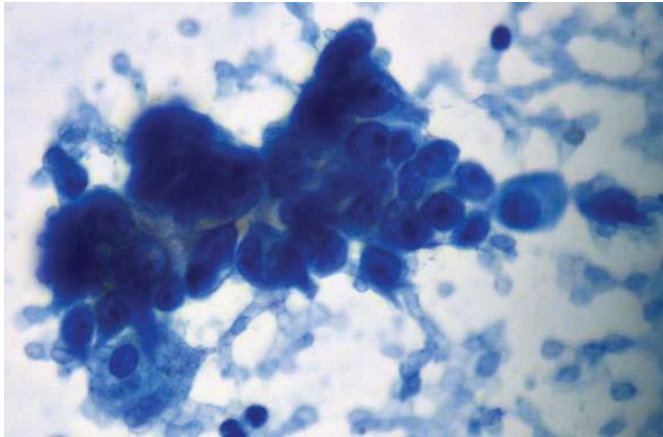


Figure 4. Fine needle aspiration of liver demonstrating three dimensional groups of malignant cells with prominent nucleoli (20X, Pap stain).

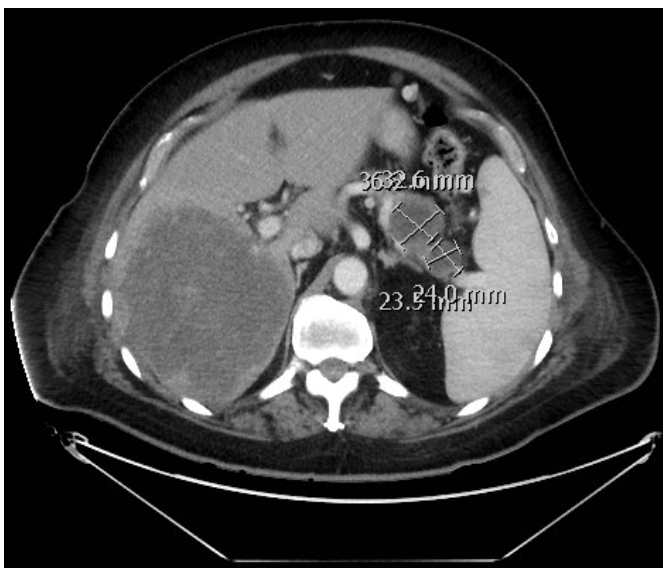


Figure 5. CT scan of abdomen and pelvis revealed large liver mass and a necrotic mass in distal body of pancreas.

In our patient, the response to steroids and IVIG was transient. Sustained elevation in platelet counts were seen with rituximab infusion suggesting refractory ITP.

Our case highlights the importance of a prompt and complete workup of thrombocytopenia which could lead to diagnosis of occult malignancies.

CONCLUSION

A detailed history and physical exam, combined with appropriate diagnostic investigations, lead to the diagnosis of metastatic pancreatic malignancy in a patient presenting with thrombocytopenia. This highlights the importance of step wise approach in clinical practice.

Conflict of interest notification statement

The authors certify that, in the last 12 months, they do not have any financial relationships with any commercial organizations that might have influenced their contribution to the abstract. All authors completely agree with the abstract and its conclusions, and accept authorship on the abstract.

References

1. Siegel RL, Miller KD, Jemal A. Cancer statistics 2016. *CA cancer J clin* 2016; 66:7-30. [PMID: 26742998]
2. Simard EP, Ward EM, Sigel R, Jemal A. Cancers with increasing trends in the United States: 1999 through 2008. *CA Cancer J Clin* 2012; 62:118-28. [PMID: 22281605]
3. Fheman C, Henley SJ, Ballard-Barbash R, Jacobs EJ, Schymura MJ, Noone AM, Pan L, et al. Annual reports to the nation on the status of cancer, 1975-2008, featuring cancers associated with excess weight and lack of physical activity. *Cancer* 2012; 1:118:2338-66. [PMID: 22460733]
4. Smith BD, Smith GL, Hurria A, Hortobagyi GN, Buchholz TA. Future of cancer incidence in the United states: burdens upon aging, changing nation. *J Clin Oncol* 2009; 27:2758-65. [PMID: 19403886]
5. Alauddin MM, De palatis L. Current and future trends in early detection of pancreatic cancer: molecular targets and PET probes. *Curr Med Chem* 2015; 22:3370-89. [PMID: 26295468]
6. Tombak A, Boztepe B, Tiftik N, Cömert M, Salim O, Aydın K, Gürkan E. Seasonal association of immune thrombocytopenia in adults. *Balkan Med J* 2015; 32:347-51. [PMID: 26740892]
7. Kolonić SO, Patekar MB, Milunović V. Diagnostic approach and treatment of immune thrombocytopenia in adults. *Acta Med Croatica* 2013; 67:3-11. [PMID: 24279250]
8. Shekarriz R, Koulaeinejad N, Nosrati A, Salehifa E. Sunitinib induced immune thrombocytopenia. *Iran J Pharm Res* 2015; 14:1295-7. [PMID: 26664400]
9. Bradley SJ, Hudson GV, Linch DC. Idiopathic thrombocytopenic purpura in hodgkin's disease: a report of 8 cases. *Clin Oncol(R coll Radiol)* 1993; 5:355-7. [PMID: 8305354]
10. Kim HD, Boggs DR. A syndrome resembling idiopathic thrombocytopenic prupura in 10 patients with diverse forms of cancer. *Am J Med* 1979; 67:371-7. [PMID: 573065]
11. Wong AS, Hon Yoon K. Paraneoplastic Raynaud phenomenon and idiopathic thrombocytopenic purpura in non-small cell lung cancer. *Am J clin Oncol* 2003; 26:26-9. [PMID: 12576920]
12. Bir A, Bshara W, George M, Fakh MG. Idiopathic thrombocytopenic purpura in a newly diagnosed pancreatic adenocarcinoma. *JOP* 2006; 7:647-650. [PMID: 17095846]
13. Varma A, Spier BJ, Pfau PR, Safdar N. A case of newly diagnosed metastatic pancreatic cancer presenting with associated immune thrombocytopenic purpura. *WMJ* 2009; 108:459-61. [PMID: 20131688]
14. Kolonić SO, Patekar MB, Milunović V. [Diagnostic approach and treatment of immune thrombocytopenia in adults]. *Acta Med Croatica* 2013; 67:3-11. [PMID: 24279250]
15. Georgiou GK, Gizas I, Katopodis KP, Katsios CS. Non-s benign glucagonoma diagnosed incidentally in a patient with refractory thrombocytopenic purpura: a report of a case. *Surg Today* 2015; 45:1317-20. [PMID: 25373364]
16. Han XD, Zhou J, Yu FK, Fang BJ, Zhang YL, Wei XD, Song YP. J. Rituximab and dexamethasone combined with cyclophosphamide for treatment of relapsed and refractory immune thrombocytopenia. *Zhongguo shi Yan xue Ye Xue Za Zhi* 2016; 24:162-6. [PMID: 26913414]