

Family Medicine & Primary Care

February 22-24, 2018
Paris, France

Ji Hyun Moon et al., Quality in Primary Care, Volume 26

COMPARISON OF DIETARY SUPPLEMENT USE BETWEEN CANCER SURVIVORS AND GENERAL POPULATION

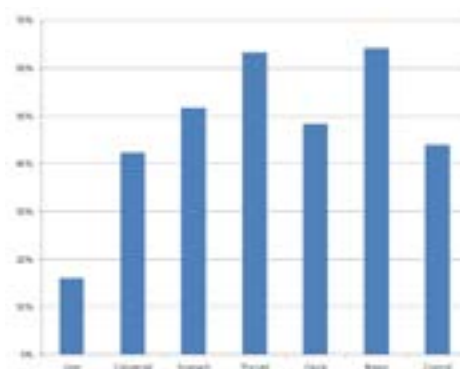
Ji Hyun Moon, Oh Yun Hwan, Mi Hee Kong and Hyeon Ju Kim

Jeju National University Hospital, South Korea

Cancer survivors are easily exposed to complementary and alternative medicine (CAM). This study was designed to assess the use of dietary supplement pattern among Korean cancer survivors compared to those without cancer history, and to identify associated factors for use of dietary supplement. In this cross-sectional analysis, data were obtained from the fifth Korean National Health and Nutritional Examination Survey (2013-2015). We analyzed 18,034 participants amongst which 576 were cancer survivors. The use of dietary supplement was assessed by a short question: "Did you take dietary supplement more than 2 weeks during the previous year?" After adjusting sex, young cancer survivors (< 65 years) tend to have a higher rate of using dietary supplement (56.0%) than same age general population (43.7%, $P=0.008$). For older non-cancer survivors (≥ 65 years) and cancer survivors the rates were 48.6% and 45.8%, respectively ($P=0.410$). After adjusting age and sex, the rate of use of dietary supplement was 44.0% in non-cancer survivors, 16.1% in hepatic cancer patients, 42.3% in colorectal cancer patients, 48.3% in cervical cancer patients, 51.7% in stomach cancer patients, 63.3% in thyroid cancer patients, and 64.2% in breast cancer patients, respectively. The rate of use of dietary supplement was significantly higher in thyroid and breast cancer patients than non-cancer subjects (all $P<0.005$). For particular cancer survivor groups, more tend to use dietary supplement than non-cancer subjects. Supplements can effect on short- and long-term treatment of cancer, so assessment of dietary supplement intake is needed for cancer survivors.

	Cancer survivor	Control	P value
< 65 year	56.0 (3.5)	43.7 (1.2)	0.008
≥ 65 years	48.6 (0.8)	45.8 (2.1)	0.41

	Cancer survivor	Control	P value
Age (yr)	50.32 \pm 0.65	45.98 \pm 0.24	<0.001
Men	34.6 (2.4)	49.9 (0.4)	<0.001
Current smoker	4.2 (1.0)	19.3 (0.5)	<0.001
Alcohol	41.4 (2.5)	58.2 (0.6)	<0.001
Regular exercise	54.1 (3.1)	45.4 (0.8)	0.006
Myocardial infarction	1.6 (0.6)	0.6 (0.1)	<0.001
Stroke	2.2 (0.7)	1.3 (0.1)	<0.001
Hypertension	29.5 (2.4)	15.3 (0.4)	0.001
Diabetes	11.7 (1.4)	6.1 (0.2)	<0.001
Dietary supplement	56.0 (0.5)	47.0 (2.5)	0.001



References

1. Song Sihan, et al. (2017) Dietary supplement use among cancer survivors and the general population: a nation-wide cross-sectional study. BMC cancer. 17.1: 891.
2. Kim Jin-Wook, et al. (2016) The Association between Taking Dietary Supplements and Healthy Habits among Korean Adults: Results from the Fifth Korea National Health and Nutritional Examination Survey (2010-2012). Korean Journal of Family Medicine. 37.3: 182-187.

Family Medicine & Primary Care

3. Kang M, et al. (2014) Dietary supplement use and its effect on nutrient intake in Korean adult population in the Korea National Health and Nutrition Examination Survey IV (2007–2009) data. *European Journal of Clinical Nutrition*. 68.7: 804-810.
4. Shin Dong Wook, et al. (2013) Management of cancer survivors in clinical and public health perspectives: current status and future challenges in Korea. *Journal of Korean Medical Science*. 28.5: 651-657.
5. Park Hyun Ah. (2011) Top 10 dietary supplements of Korean adults from the 4th Korea National Health and Nutrition Examination Survey. *Korean Journal of Family Medicine*. 32.4: 263-266.

Biography

Ji Hyun Moon is currently working as an Assistant Professor in Department of Family Medicine at Jeju National University Hospital. She has published so many articles related to health care in various journals.

tropiajh@gmail.com