

DOI: 10.21767/2471-8300.100018

## Anterior Polar Cataract

Abhishek Onkar<sup>1\*</sup>, Suwarna Suman<sup>1</sup> and Saurabh Samdariya<sup>2</sup>

<sup>1</sup>Department of Ophthalmology, AIIMS, Jodhpur, Rajasthan, India

<sup>2</sup>Department of Radiation Oncology, AIIMS, Jodhpur, Rajasthan, India

\*Corresponding author: Abhishek Onkar, Department of Ophthalmology Residential Complex, Basni Industrial Area Phase-2, Aiiims Jodhpur, Rajasthan, India, Tel: +91-9871984534; E-mail: onkaratdmch@gmail.com

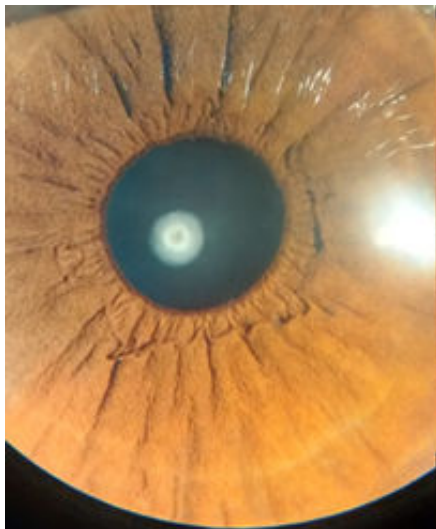
Received date: January 23, 2017; Accepted date: January 25, 2017; Published date: January 27, 2017

Citation: Onkar A, Suman S, Samdariya S (2017) Anterior Polar Cataract. J Eye Cataract Surg 3: 18. doi: 10.21767/2471-8300.100018

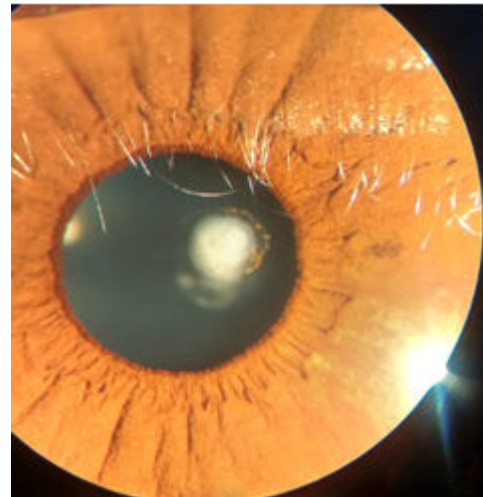
Copyright: © 2017 Onkar A, et al. This is an open-access article distributed under the terms of the Creative Commons Attribution License, which permits unrestricted use, distribution, and reproduction in any medium, provided the original author and source are credited.

### Clinical Image

A 41 year old male presented with complaint of diminution of vision for near with both eyes for past 5 months. Slit-lamp examination revealed roughly pyramidal shaped anterior polar lenticular opacities in both eyes with some iris pigments on anterior lens capsule of left eye. Anterior polar cataracts comprise 4-15% of congenital cataracts and are mostly non-progressive (Figures 1A and 1B) [1].



**Figure 1A:** Slit-lamp view of anterior polar cataract in right eye.



**Figure 1B:** Slit-lamp view of anterior polar cataract in left eye viewed under higher magnification (40x) depicting pyramidal shape

### References

1. Jaafar MS, Robb RM (1984) Congenital anterior polar cataract: a review of 63 cases. *Ophthalmology* 91: 249-254.